



Scan to Contact Us

**Advanced,  
Around-The-Clock  
Monitoring of  
Your Critical  
Facilities and  
Equipment**

**M**aintaining critical infrastructure and preventing unplanned outages are crucial for meeting electricity demands and regulatory standards. Mitsubishi Electric Power Products, Inc. (MEPPI) introduces the Power-I® platform, designed to ensure the reliability of your assets while reducing operational costs.

### Why Power-I®

Power-I® delivers advanced, real-time intelligence for smarter asset management, ensuring your infrastructure remains operational, secure, and cost-effective.

### Thermal Inspection Suite

#### Intelligent Thermal Analysis:

Leverage Power-I®'s ability to identify nominal equipment baselines, create analysis groups, or simply alert on temperature threshold deviations.

### Visual Inspection Suite

#### Computer Vision and AI:

Digitize data and transform it into useful information.

#### Gauge Reading & Station Perimeter Monitoring:

Visual recognition of analog oil and pressure gauge readings, fence sign and vegetation detection.

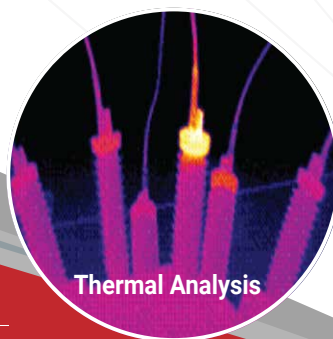
### Data Management & Custom Alerts

Available data visualization tools such as charts, graphs, and mission logs to track asset conditions over time.

### Real-Time Alerts

**Receive Immediate Email Notifications** of potential problems and initiate on-demand tours for verification.

**Export Power-I® Data<sup>1</sup>** to data historians (OSI PI), Asset Management Systems (work order



Thermal Analysis



Fixed & PTZ Cameras



Gauge Reading



**MITSUBISHI ELECTRIC  
POWER PRODUCTS, INC.**



automation), and Asset Performance Systems (inform asset health scoring programs).

### Enhanced Reliability

Real-time monitoring and advanced insights help prevent outages and ensure continuous operation.

#### **Proactive Response:**

Quickly address equipment issues and reduce unexpected outages.

#### **Remote Assessment:**

Utilize remote sensors to gain situational awareness and improve preparedness prior to arriving at the site, reducing outage durations.

#### **Extended Equipment Life:**

Protect and maintain equipment effectively.

### Cost Reductions

Decreases operations and maintenance expenses through efficient, automated monitoring.

#### **Reduced O&M Costs:**

Minimize the need for onsite inspections.

#### **Reduced Repair Costs:**

Identify anomalies, alert personnel, and act on corrective measures prior to equipment failure or damage.

#### **Efficient Personnel Use:**

Optimize staff deployment through automation of data collection, documentation, review, and work orders by way of technology integrations.

### Informed Decision-Making:

Access comprehensive real-time data for better maintenance planning.

### Improved Security & Safety

Advanced visual and thermal data analysis improves facility security and employee safety.

#### **Reduce Risk:**

Reduce employee travel, exposure to inclement weather, and hazardous site conditions.

### Innovative Technology

Developed with input from utility customers, Power-I<sup>®</sup> integrates cutting-edge computer vision and machine learning to inspect and analyze critical infrastructure.

### Agnostic Data Collection

#### **Fixed and PTZ Cameras:**

Equipped with visible light (optical) and infrared sensors for comprehensive, continuous equipment monitoring to identify changes, damage, abnormal readings, etc.

#### **Thermographic Cameras:**

Utilize radiometric thermal sensors to track equipment temperatures, detect anomalies, and send alerts on potential issues.

#### **Autonomous Mobile Robots:**

Perform completely unsupervised, scheduled autonomous inspection rounds gather ground truth data and enhancing situational awareness.

#### **Drones:**

Utilize drone + dock systems to remotely supervise data collection missions, creating operational efficiency and enhancing data collection abilities in the field.

#### **Manual Image Import Tool:**

Manually upload images from any source for Power-I<sup>®</sup> analytic assessment.



### Additional Features Include:

**Wide Integration:** Compatible with Skydio Drones, FLIR, Boston Dynamics SPOT<sup>®</sup> Robot, and ONVIF Profile S.

**Scalable:** Adaptable to both small and large installations.

**Expert Engineering:** Backed by Mitsubishi Electric's 30+ years in substation design and support.

<sup>1</sup>via 3rd party integration.