

# Ethernet-based TCMS

## (Train Control and Monitoring System)

Mitsubishi Electric provides TCMS based on train-wide Ethernet communication and wireless communication between train and wayside for reliable and efficient train operation.

### Ethernet (100BASE-TX) network

High-speed and open network

IEC61375(Ethernet Train Backbone/Ethernet Consist Network)

### Integrated Train-wide Control

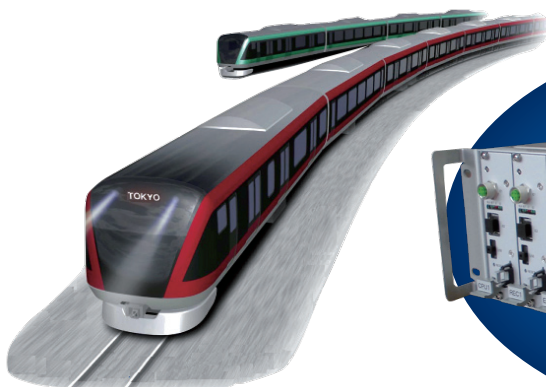
Total control over on-board equipment operation for improved energy efficiency

### Reduction of Hard-wires

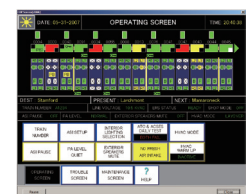
Reduced in-car **hard-wires** by transmitting control commands and applying Remote I/O

### Data transmission to WMDS

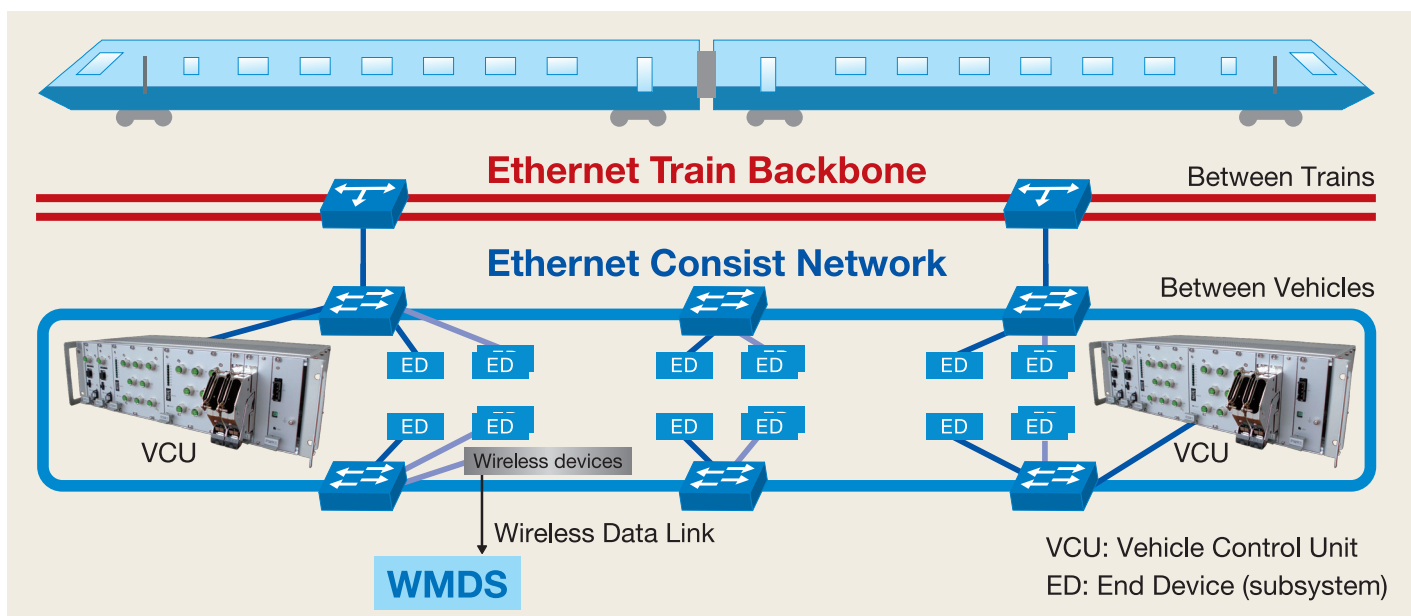
Remote monitoring, diagnosis and parameter setting of onboard equipment



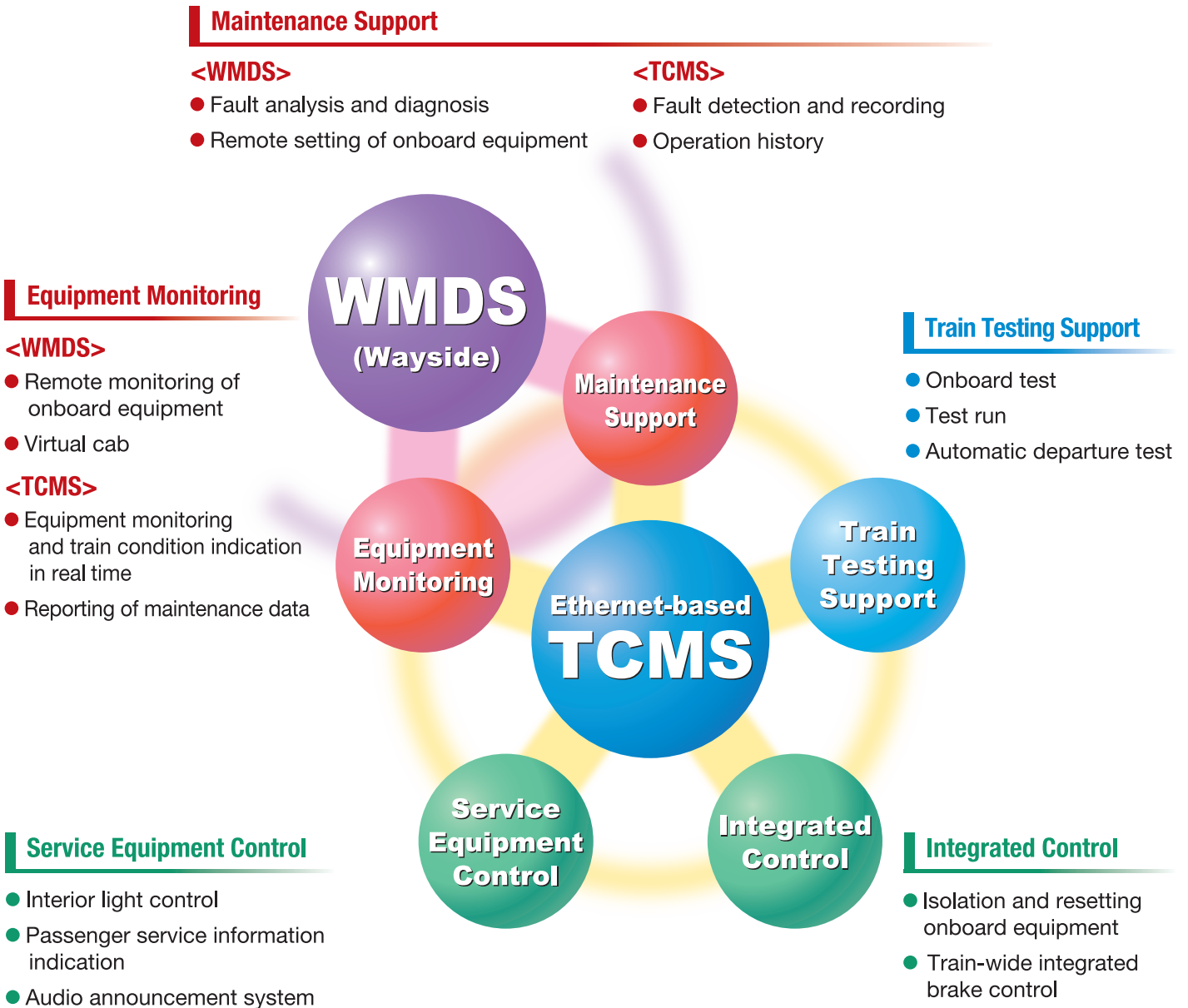
Drivers Display



Monitoring



- **High bandwidth train-wide network enhances all TCMS functions:**  
equipment monitoring, maintenance support, train testing support, service equipment control and integrated control.
- **Data communication to WMDS enhances two TCMS functions:**  
equipment monitoring and maintenance support.



**MITSUBISHI ELECTRIC CORPORATION**

<http://www.MitsubishiElectric.com>